

Grove Manitowoc National Crane Potain




Grove GCK3045

Features and benefits

 **45 t**

 **34 m**

 **6,3 m - 10,2 m**

 **47 m**



Content

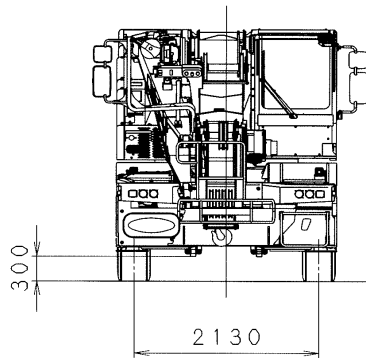
Dimensions and weights	3
Boom	4
Jib / Runner / Hookblocks	5
Driveline / Engine	7
Steering	8
Outriggers	9
Cab and instrumentation	10
Access	11
Storage	12
Accessories	13

The GCK3045 city crane is a compact three-axle single cab with a "boom down" design, making it ideal for work in **city centres** and **indoor industrial locations**.

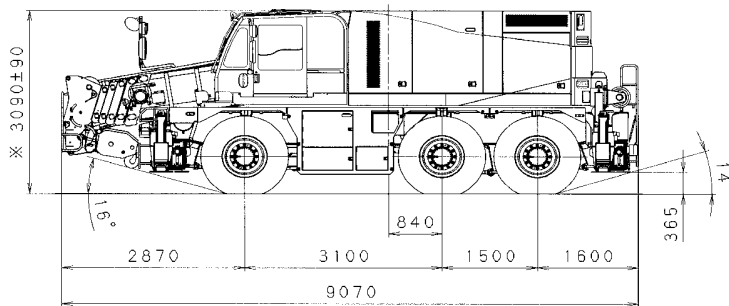
- Long boom: 34 m
- Powerful drive
- Tight turning radius
- Rigging within carrier width
- Fully equipped within 12 t per axle
- Highly manoeuvrable



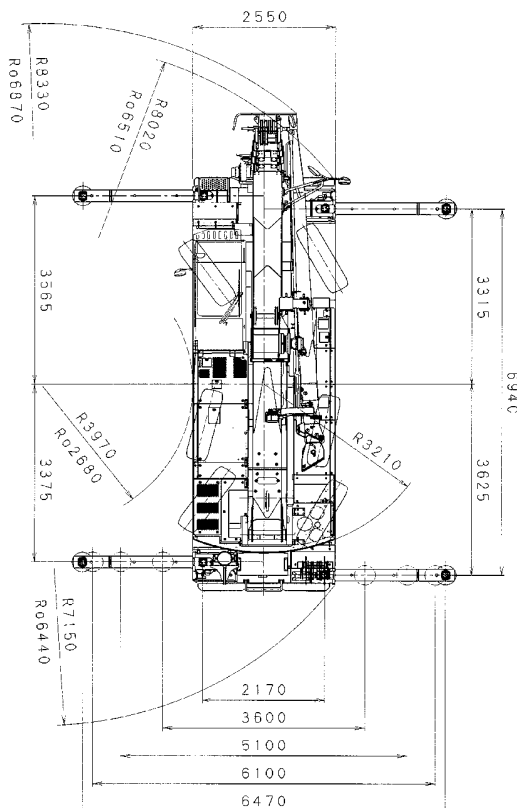
Dimensions and weights



Dynamic test 50 t = 40 t x 1,25



Rated load 28,5 t x 4,5 m



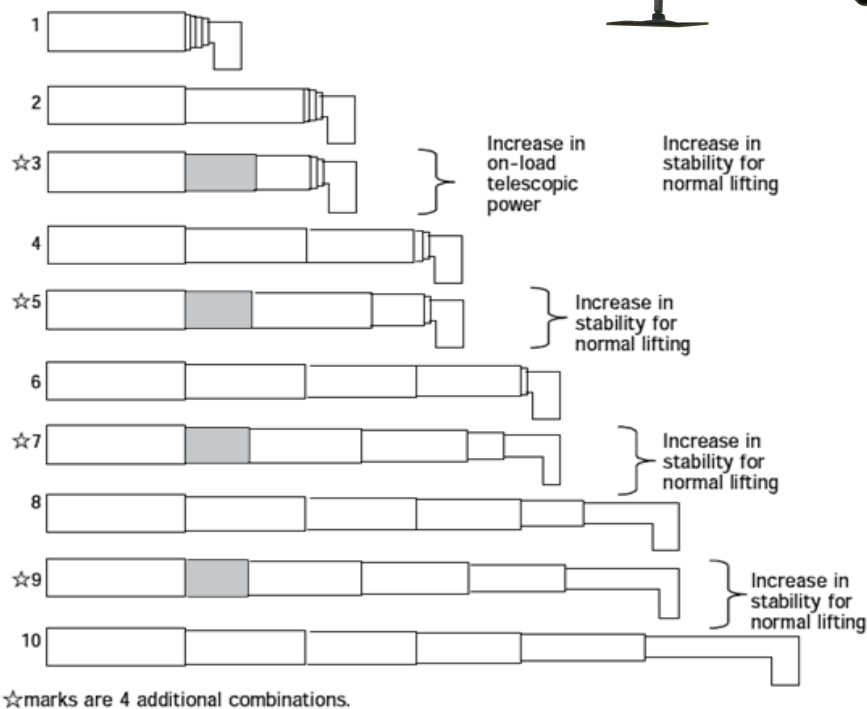
- Only 2,55 m wide for driving through narrow doors.
- 9,07 m length and tight turning radius for easy manoeuvres on jobsite.
- 3,00 m high for better accessibility and operating in low buildings.
- Axle loads: 3 x 12 t incl. 6x6x6 drive/steer, twist jib, runner, headache ball, rigging equipment.

Boom

Six-sections full power boom from 7,9 m to 34 m.



Lifting capacities are optimized through variation of boom extension sequences.



Twist jib, runner, hookblocks

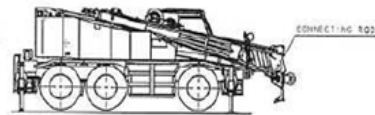


Hydraulic rigging assist drum with remote pendant control lowers jib to vertical position.

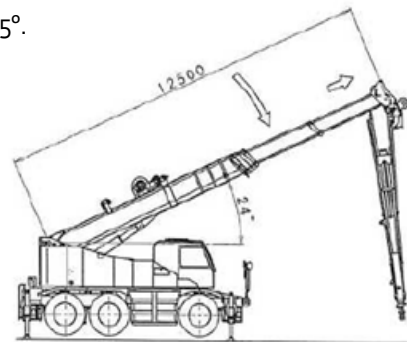


Twist jib: easy rigging in confined spaces

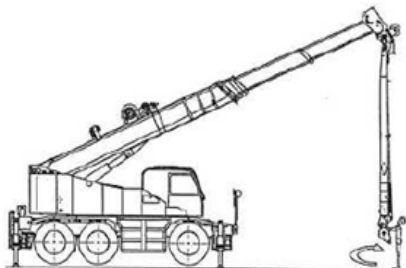
Two-section jib 6,3 m/10,2 m offsets at 5°, 25° and 45°.



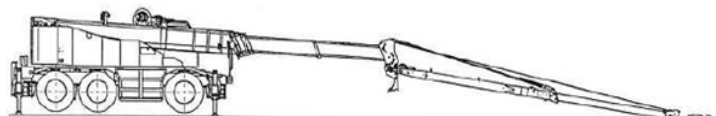
1 - Transport width within 2,55 m.



2 - Elevate boom and release jib (stays within 2,55 m).



3 - Twist jib in correct position and bolt (stays in 2,55 m).



4 - Ready for work.

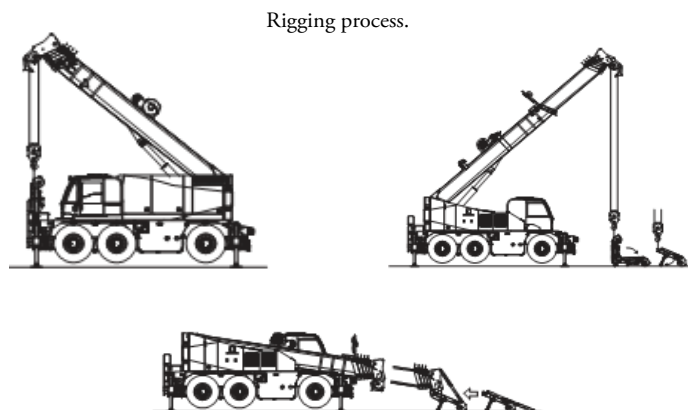
This twist jib format creates the possibility to rig the jib within the carrier width.

Twist jib, runner, hookblocks

Runner: The runner allows the operator to gain more hook height under overhead obstructions while working indoors.

Offsets in three positions.

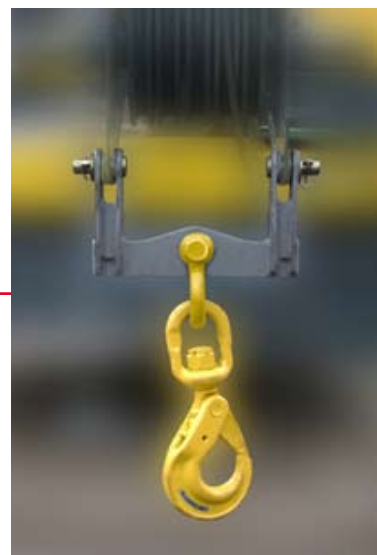
Maximum lift: 15 t.



Storage on rear of chassis.



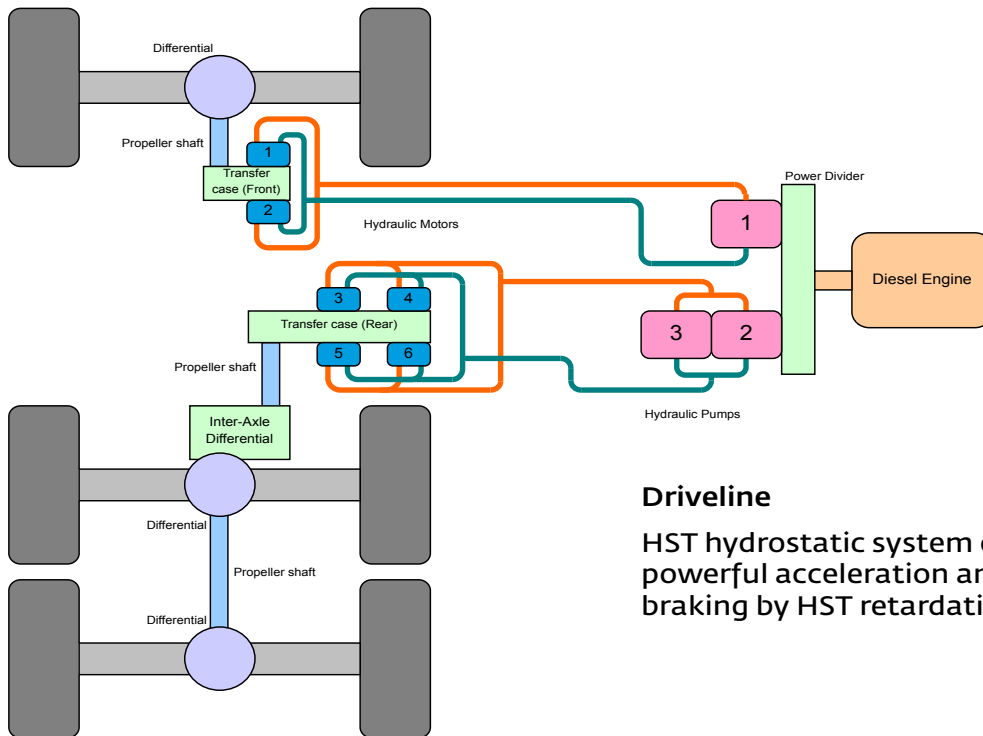
Automatic **hookblock stowage** for easy remote handling.
 No need to tie down hookblock on front bumper.



Searcher Hook

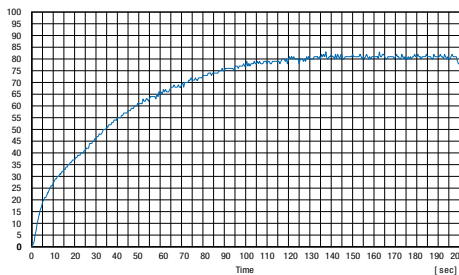
12,5 t capacity.
 Allows additional reach under overhead obstructions.

Driveline / Engine



Driveline

HST hydrostatic system offers powerful acceleration and efficient braking by HST retardation.



Acceleration pattern.

Engine : HINO E 13 C.
 Six cylinder common rail
 diesel engine
 superstructure mounted
 330 kW @ 1800 rpm.
 Euromot IIIA.



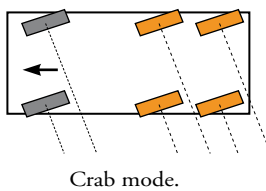
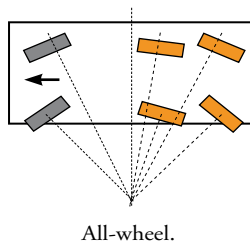
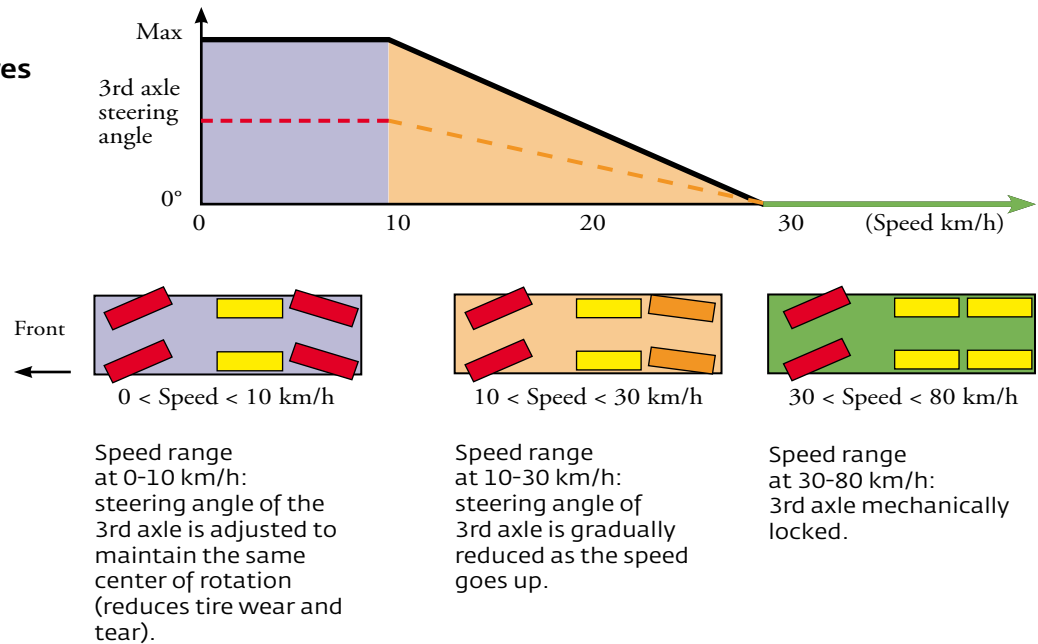
Steering

"Steer by wire" - Electronic rear wheel steer

On-road

Wear reduction on tires

3rd axle automatically adjusted by detecting the 1st axle steering angle.

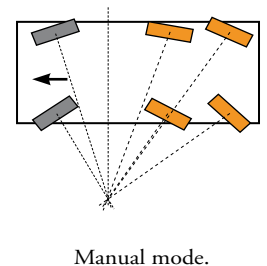
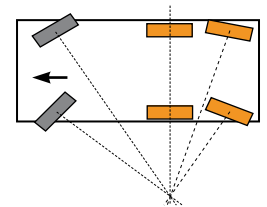
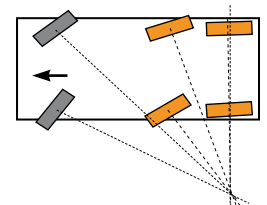


Off-road

Coordinated all-wheel and crab steering:

First axle manual steer, second and third axle follow axle 1 for tightest turning radius.

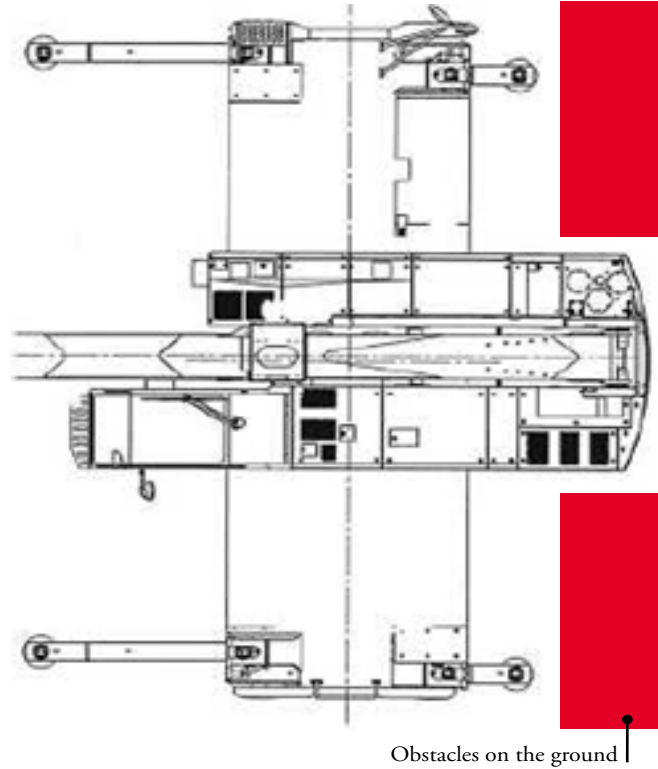
Manual steering: First axle manual steer, axle two and three by joystick for variable steering angle.



Outriggers

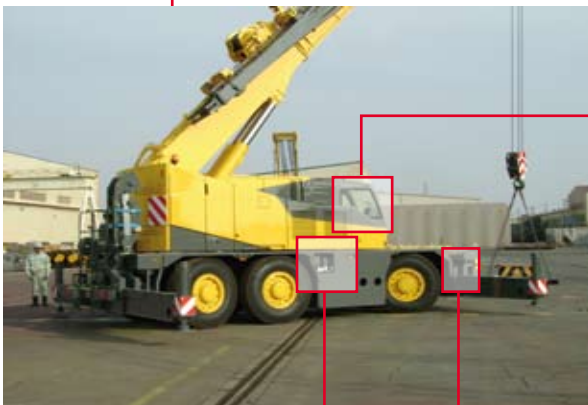
Five position outriggers to operate in confined spaces.

Odd outrigger selection enables crane set-up with individual extension of each outrigger beam.
 Combination of **LMI programming** and **working range limiter** functions ensures safe lifting through 360°.
 The odd outrigger set-up creates the possibility to gain access to narrow job sites.



Obstacles on the ground

LMI monitor-crane on outrigger set-up.
 91 % utilization 50 % utilization



« Bubble » level gauge.



Outrigger lock pins
 Outrigger extension
 potentiometer.

Outrigger controls on carrier
 and upper works.

Cab and instrumentation

All working configurations and crane data are shown on the LMI monitor.



Selection of either hoist or rear view on video monitor.



Automotive style dashboard.

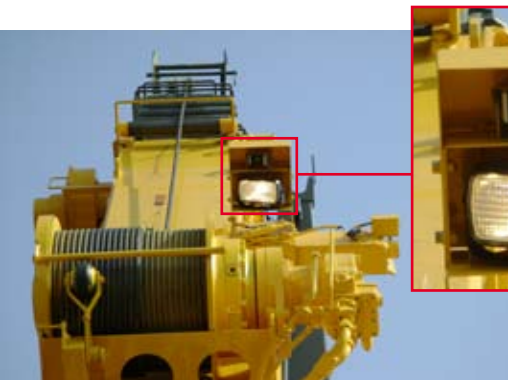


LMI control panel.



Driving, steering and suspension control.

Air conditioning standard.



Hoist camera and light.



Rear view camera.



Access

Easy and safe access for fueling.
 Extendable platform with rear access ladder attached.



Rear steps.

Cab over side.
 Side step 150 mm.
 Joystick pedestal folding back for access.



Platform and access ladder for fueling.



Front steps.

Storage

Outrigger spot lights
for each outrigger.



Stowage space
on carrier.



Rigging box
on the back
of the crane.



Wheel chocks
stowed on carrier front.



Accessories

Night time illumination with three spotlights.



Cab roof and lower turntable lights.

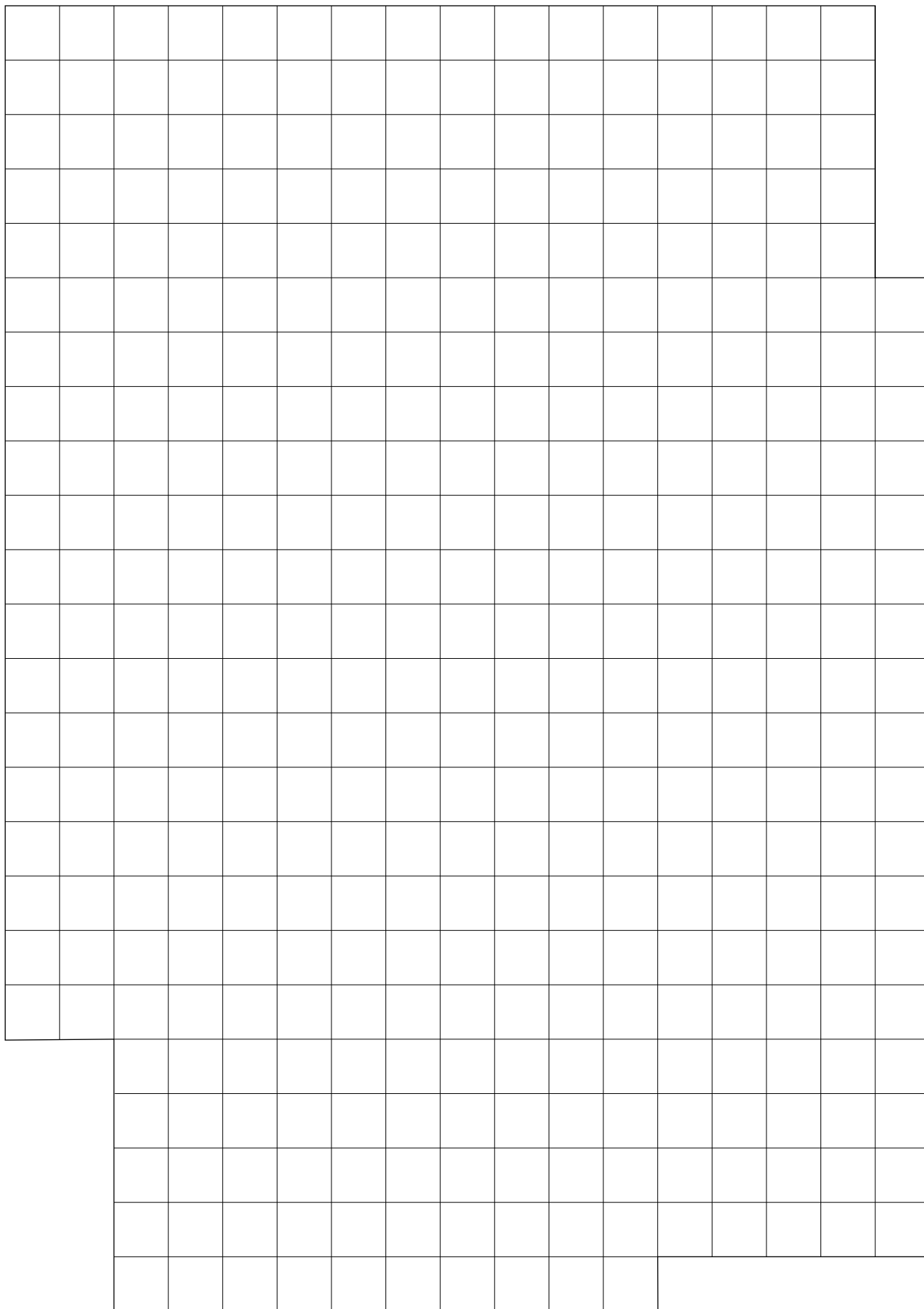


Boom light.



Microphone and speaker.





[illegible]



Grove Manitowoc National Crane Potain

Regional Headquarters

Manitowoc - Americas

Manitowoc, Wisconsin, USA

Tel: +1 920 684 6621

Fax: +1 920 683 6277

Shady Grove, Pennsylvania, USA

Tel: +1 717 597 8121

Fax: +1 717 597 4062

Manitowoc - Europe, Middle East & Africa

Ecully, France

Tel: +33 (0)4 72 18 20 20

Fax: +33 (0)4 72 18 20 00

Manitowoc - Asia Pacific

Shanghai, China

Tel: +86 21 6457 0066

Fax: +86 21 6457 4955

Regional Offices

Americas

Brazil

Alphaville

Mexico

Monterrey

Chile

Santiago

Europe, Middle East & Africa

Czech Republic

Netvorice

France

Baudemont

Cergy

Decines

Germany

Langenfeld

Hungary

Budapest

Italy

Parabiago

Netherlands

Breda

Poland

Warsaw

Portugal

Baltar

Russia

Moscow

U.A.E.

Dubai

U.K.

Gawcott

Asia - Pacific

Australia

Brisbane

Melbourne

Sydney

China

Beijing

Xi'an

India

Hyderabad

Pune

Korea

Seoul

Philippines

Makati City

Singapore

Factories

Brazil

Alphaville

China

TaiAn

Zhangjiagang

France

Charlieu

La Clayette

Moulins

Germany

Wilhelmshaven

India

Pune

Italy

Niella Tanaro

Portugal

Baltar

Fânzeres

Slovakia

Saris

U.S.A.

Manitowoc

Port Washington

Shady Grove

This document is non-contractual. Constant improvement and engineering progress make it necessary that we reserve the right to make specification, equipment, and price changes without notice. Illustrations shown may include optional equipment and accessories and may not include all standard equipment.